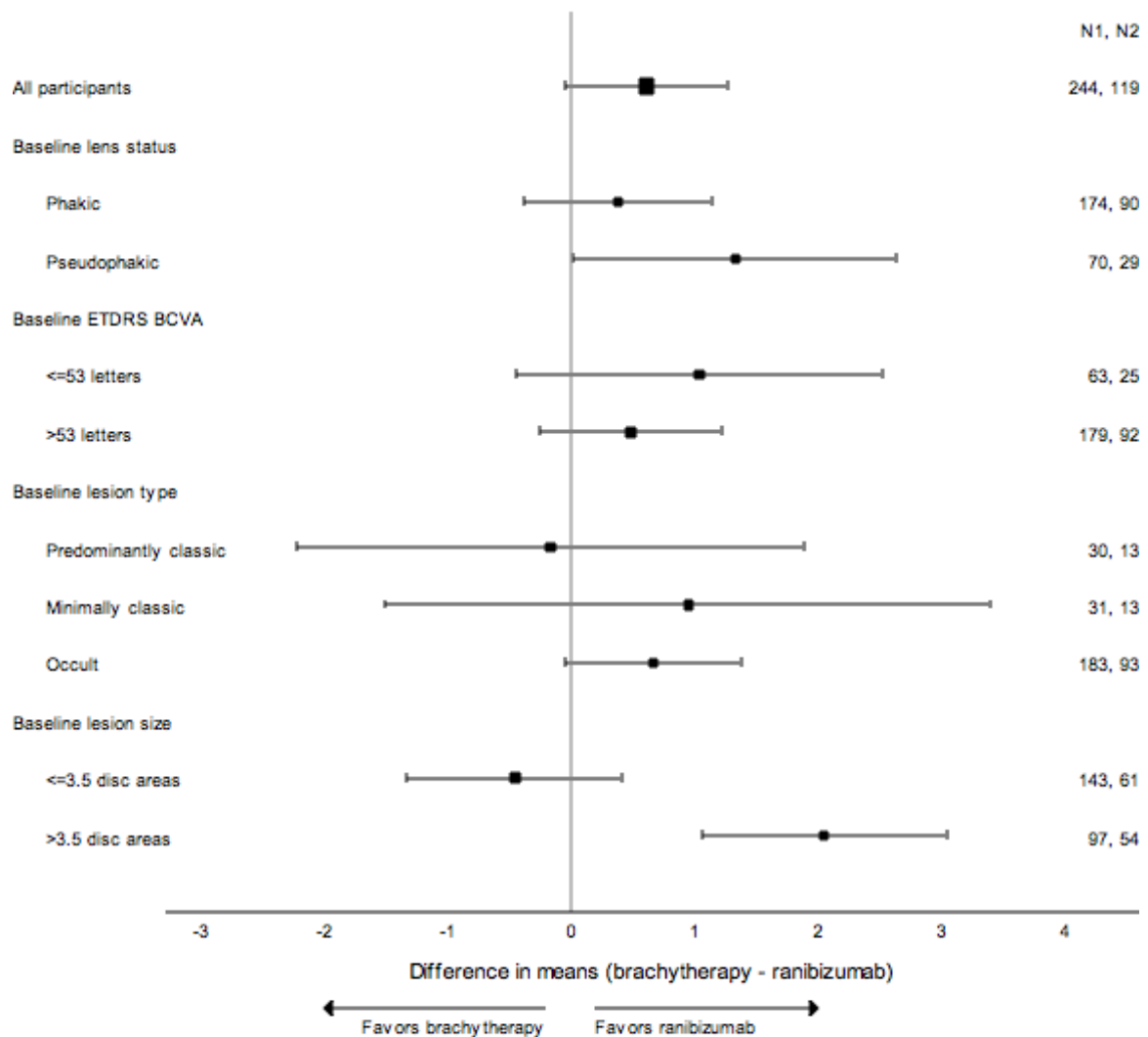


Figure 8: Subgroup analysis of visual acuity



The forest plot shows the change in Early Treatment of Diabetic Retinopathy Study (ETDRS) Best Corrected Visual Acuity (BCVA) from enrolment to Month 12. The conventions and statistical tests are the same as those provided in the legend to Figure 7, except that the ANCOVA model also adjusted for baseline BCVA. None of the subgroups met the 5 letter non-inferiority margin, and all favored ranibizumab, several of which reached nominal statistical significance.